

# FONTAINE

## The No-Slack® Fifth Wheel Technology Leader



6000



7000



7000CC



H7



**FONTAINE®**  
FIFTH WHEEL

[www.fifthwheel.com](http://www.fifthwheel.com)  
800-874-9780

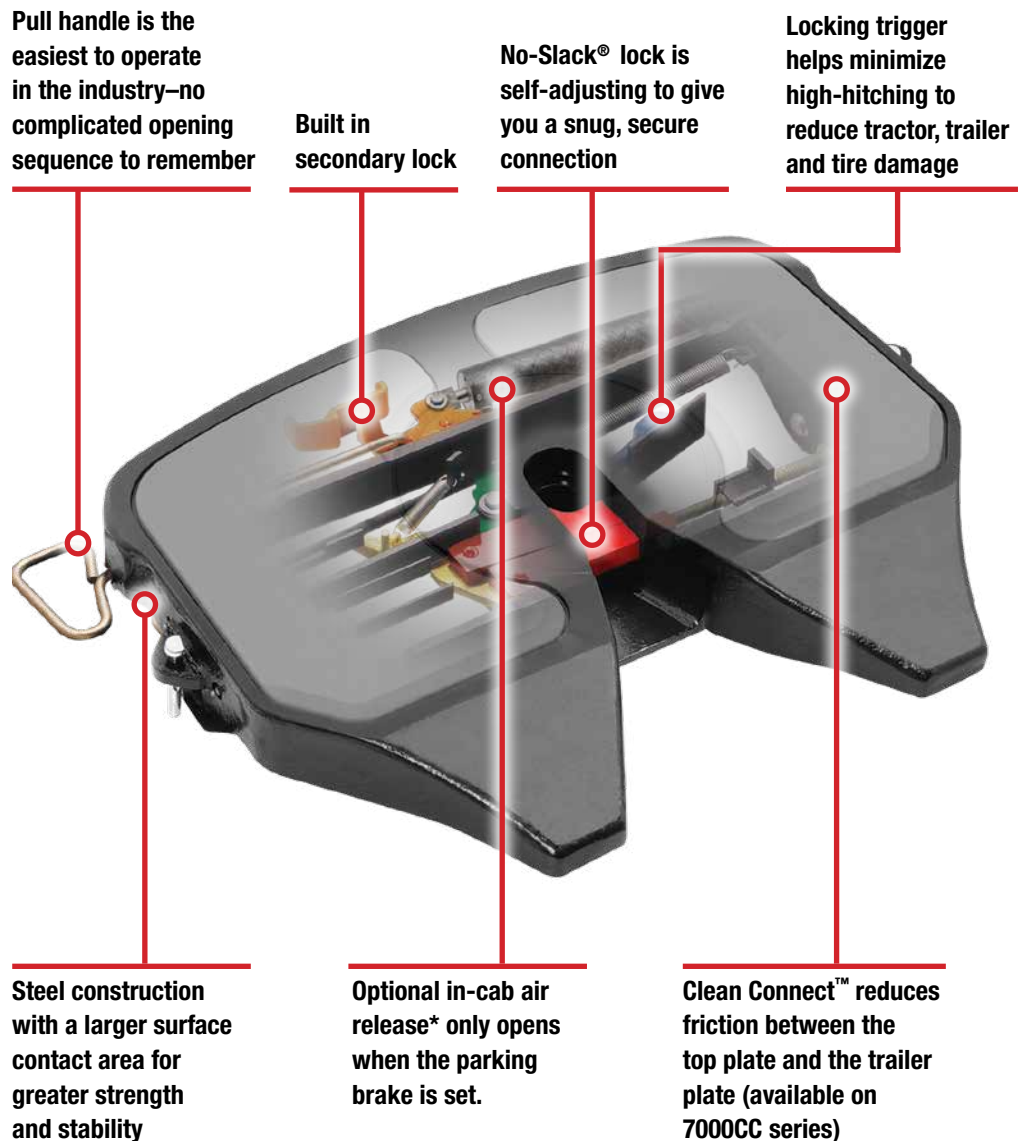
## Fontaine Fifth Wheel No-Slack®

*The world's only self-adjusting fifth wheel lock*

Contents	Page
<b>General Product Information</b>	
No-Slack® Technology .....	2
Part Number Identification .....	3
Serial Number Location .....	3
Measurements.....	3
<b>Options</b>	
Top Plate Options .....	4
Mounting Options.....	5
Assembly Options .....	6-7
Important Application Notes .....	8
Duty Class Restrictions.....	9
<b>Helpful Information</b> .....	10
<b>New Products</b> .....	11
<b>Weight Savings Assemblies</b>	
No-Slack® 6000 NWB ....	12-13
No-Slack® 6000, 7000 & 7000CC BSL.....	14
No-Slack® 6000, 7000 & 7000CC PML .....	15
<b>Standard/Moderate Duty Assemblies</b>	
No-Slack® 6000, 7000 & 7000CC LWB .....	16
<b>Severe Duty Assemblies</b>	
No-Slack® H7 AWB .....	17
No-Slack® H7 AWX .....	17
No-Slack® H7 AWB Blocked.	18
No-Slack® H7 PS5 .....	19
No-Slack® H7 PS5 Blocked ..	19
<b>Research &amp; Development</b> ...	20



For a more complete product listing please scan code below or go to:  
[www.fifthwheel.com/models/](http://www.fifthwheel.com/models/)



**Pull handle is the easiest to operate in the industry—no complicated opening sequence to remember**

**Built in secondary lock**

**No-Slack® lock is self-adjusting to give you a snug, secure connection**

**Locking trigger helps minimize high-hitching to reduce tractor, trailer and tire damage**

**Steel construction with a larger surface contact area for greater strength and stability**

**Optional in-cab air release\* only opens when the parking brake is set.**

**Clean Connect™ reduces friction between the top plate and the trailer plate (available on 7000CC series)**

*\*For new truck builds, Fontaine supplies an air cylinder in the fifth wheel. All other components for in-cab air release are supplied and installed by the truck OEM. For retrofitting standard release models, kits are available through Fontaine Parts Connection.*



For weight savings top plates, mounts and assemblies, look for this symbol.



For new innovative Fontaine Fifth Wheel products look for this symbol

# Part Number Identification

This guide explains the nomenclature for Fontaine Fifth Wheel complete assembly part numbers.

See example part number at right:

**SL6NWB675012**

## Release

- SL** = Side left
- SR** = Side right
- AA** = Air actuated
- BL** = Blocked left (H7 only)
- AL** = Auto-lube left
- SLE** = Electronic lock indicator left (7000 only)

## Top plate model

- 6** = No-Slack® 6000
- 7** = No-Slack® 7000
- C** = 7000CC Clean Connect
- H7** = No-Slack® H7

## Mounting Bracket model

- NWB** = Light weight outboard slide
- BSL** = Stationary bracket mount
- PML** = Adjustable plate mount
- LWB** = Light weight slide bracket
- AWB** = Air slide bracket
- BLAWB** = Blocked Air slide bracket
- AWX** = Air slide bracket
- PS5** = Stationary short plate mount
- BLPS5** = Blocked Stationary short plate mount

## Mounting height

**6750** = 6-3/4"  
Actual height from truck frame to top of fifth wheel.

- Examples:
- 7125 = 7-1/8"
  - 7250 = 7-1/4"
  - 8375 = 8-3/8"
  - 9750 = 9-3/4"

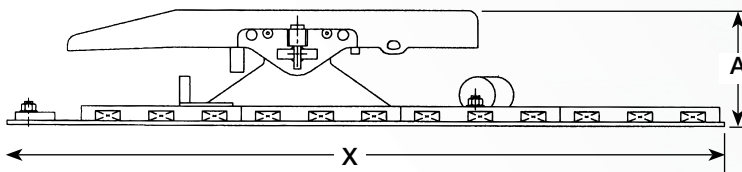
## Slide travel

**12** = 12" slide  
Sliding fifth wheels only.

- Examples:
- 12 = 12" slide
  - 24 = 24" slide
  - 36 = 36" slide
  - 48 = 48" slide

# Measurements & Serial Number Location

## How do I measure a fifth wheel?



The installed height of all Fontaine models is measured from the top of the truck frame to the top of the fifth wheel. For standard models dimension "A" is a part of the model number. For example, if dimension "A" in this diagram is 7.75 inches, it would appear in the model number as 7750 (Example: SL7AWB**7750**24).

## How do I find the serial number

Serial number engraved directly into the right side of fifth wheel skirt. Note: position 5 and 6 of the serial number indicates the year built. Serial number is always 9 digits.



No-Slack® right side view serial number location



# No-Slack® Top Plate Options

## No-Slack® 6000 series

50,000 pounds vertical load.  
150,000 pounds drawbar pull.

The new Fontaine 6000 Series Fifth Wheel cuts weight without cutting performance or load rating. The proven design was made possible by Finite Element Analysis technology and strategic placement of high strength alloy steel. This lighter 6000 Series No-Slack® fifth wheel combined with NWB mounting bracket is approximately 60 lbs lighter with no reduction in load ratings. The new 6000 features the same legendary No-Slack® locking technology. Lock automatically self-adjusts to the trailer kingpin for a smoother ride, lower maintenance costs and longer component life. Rated for standard to moderate duty on-highway use only, including tankers.



## No-Slack® 7000 series

55,000 pounds vertical load.  
150,000 pounds drawbar pull.

The 7000 series offers all the benefits of our 6000 series, but in a cast design rather than pressed steel. It features the self-adjusting No-Slack® locking mechanism. Rated for moderate to severe duty for both on-highway and off-highway applications.



## No-Slack® 7000CC series Clean Connect™

55,000 pounds vertical load.  
150,000 pounds drawbar pull.

The 7000CC series Clean-Connect™ offers all the benefits of the 7000 series fifth wheels plus the added benefit of a grease free top plate surface. With Clean-Connect™ technology the fifth wheel no longer requires grease to lubricate between the top plate surface and the trailer coupling plate. This eliminates the labor costs, materials and downtime associated with greasing the top plate surface. Rated for moderate duty for on-highway applications.



## No-Slack® H7 Heavy Duty Series

**Rating on AWB mounts**    **Rating on PS5 and AWX mounts**

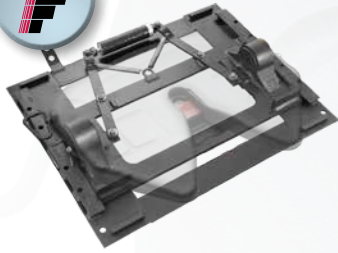
62,500 lbs vertical load    70,000 lbs vertical load  
150,000 pounds drawbar    200,000 pounds drawbar pull

The H7 Series offers all the benefits of No-Slack® technology in a steel reinforced cast housing. This rugged workhorse is rated for extra heavy-duty to severe-duty in both on-highway and off-highway applications. It's also available as a blocked fifth wheel to accommodate frameless dump applications

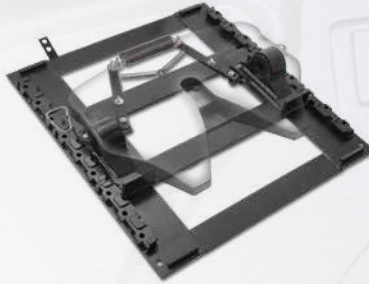


# Mounting Options

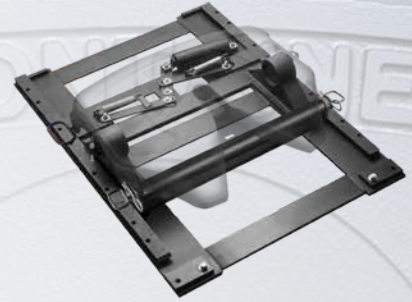
## Sliding Fifth Wheel Assemblies



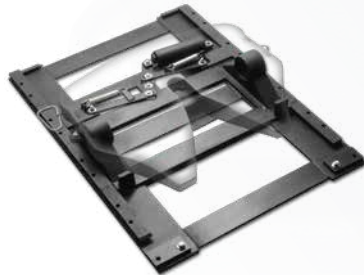
**NWB (Light weight outboard)**  
*Weight savings assemblies*  
Model 6NWB (No-Slack® 6000 top plate)



**LWB (Light weight bracket)**  
*Moderate duty assemblies*  
Model 6LWB (6000 top plate)  
Model 7LWB (7000 top plate)  
Model CLWB (7000CC top plate)



**AWX (Extra Heavy Duty Air Slide Bracket)**  
*Severe duty assemblies*  
Model H7AWX (H7 top plate)



**AWB (Air Slide Bracket)**  
*Severe duty assemblies*  
Model H7AWB (H7 top plate)



**AWB Blocked**  
*Severe duty assemblies*  
Model BLH7AWB (H7 top plate)

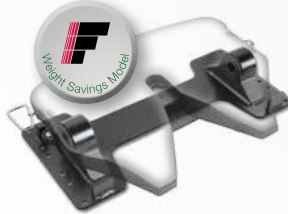
This assemblies catalog features Fontaine Fifth Wheel's more popular assemblies. For a more complete product listing please scan code below or go to: [www.fifthwheel.com/models/](http://www.fifthwheel.com/models/)



## Stationary Fifth Wheel Assemblies



**BSL (Stationary bracket mount)**  
*Moderate duty assemblies*  
Model 6BSL (6000 top plate)  
Model 7BSL (7000 top plate)  
Model CBSL (7000CC top plate)



**PML (Adjustable plate mount)**  
*Moderate duty assemblies*  
Model 6PML (6000 top plate)  
Model 7PML (7000 top plate)  
Model CPML (7000CC top plate)



**PS5**  
**(Reinforced stationary plate mount)**  
*Moderate to severe duty assemblies*  
Model H7PS5 (H7 top plate)



**PS5 Blocked**  
**(Reinforced stationary plate mount)**  
*Moderate to severe duty assemblies*  
Model H7PS5 (H7 top plate)



# Fifth Wheel Assembly Options

## Air Actuated

Fontaine's air actuated No-Slack® fifth wheels open with a release valve located on the dash. To open, set the tractor parking brake and pull the release valve. Hold the valve open until the locking mechanism is locked in the open position. The pull valve will not activate the air cylinder unless the tractor parking brakes are set.

(6000/7000/7000CC/H7)

Specify "AA"

Air actuated models include an air cylinder

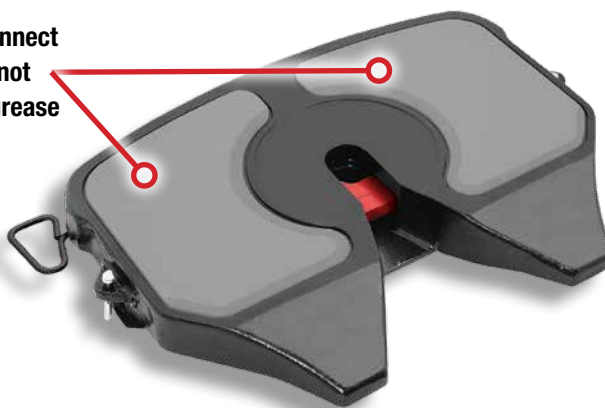


## Clean Connect

Available on 7000CC models. Special Clean Connect™ insert pads act as a lubricant between the top plate surface and the trailer coupling plate without using any grease! Now you can lower operating cost because the grease and the labor to apply the grease at every couple is no longer necessary. Clean Connect also improves steer tire wear (7000CC).

Specify "SLC Top Plate"

Clean Connect pads do not require grease



## Lock Sensing Technology (LST) Electronic Lock Indicator

This system improves driver awareness of the fifth wheel lock status. Two electronic sensors work together to let the driver know whether or not the kingpin is correctly positioned inside the locking mechanism. When the sensors indicate a successful coupling, a green light illuminates. After coupling, the system continuously monitors the connection and warns the driver with a red light if a change occurs. (7000/7000CC).

Specify "SLE"



# Fifth Wheel Assembly Options

## Slide Stops

Optional inserts to limit forward slide travel.  
Consult Fontaine Fifth Wheel



## Blocked (No-tilt) Fifth Wheels

Some customers prefer the fifth wheel to be blocked which means the fifth wheel will not pivot forwards or backwards. This is also known as a no-tilt fifth wheel. Blocked fifth wheels are especially recommended in frameless dump applications (H7).

Specify "BL"

Convert your fifth wheel from blocked to tilting by pulling these pins.



## Dual Assist Camera System

The Fontaine Dual Assist Camera mounts to your truck frame and lets you watch your trailer couple from the comfort of your cab. It's the better, easier, smarter way to couple trailers. Although this system makes trailer coupling easier and more convenient than ever, it does not replace the requirement by law that the driver exits the cab and visually inspects the fifth wheel to ensure a proper connection.



*On-dash display allows you to view trailer coupling from two perspectives. One camera shows the trailer while backing up. The other camera is focused on the fifth wheel lock to view the actual coupling of the trailer. Infrared technology is employed for night vision capability.*



# Important Application Notes

## Top plate selection notes:

- For No-Slack® features see page 2. For fifth wheel top plate selection guide see page 4. Air activated release styles are available on select models.

## Mount selection notes:

- See page 5 when choosing a sliding mount or stationary mount for your top plate and application.
  - A sliding mount gives the owner more options. You can transfer weight between tractor axles, handle trailers with different kingpin settings, and vary vehicle combination lengths. A sliding mount fifth wheel also provides additional maneuverability, accommodates trailers with short landing gear clearance and allows the driver to extend the unit for maximum comfort when weight allows. If you choose a sliding mount, Fontaine offers a wide selection of slide lengths.

Stationary mount fifth wheels (plate or angle mounts) are an option and are ideal for applications where the trailer kingpin setting, axle loading and vehicle length all remain the same for the entire fleet. Stationary mount fifth wheels are usually lighter than sliding mount fifth wheels.

## Important application notes:

- If any single restriction factor within your application is surpassed within a given duty level, the next duty level must be selected.
- For more information on standard, moderate and severe duty, please review the **duty class restrictions** on page 9.
- When selecting a fifth wheel, if the application or vehicle usage places the maximum capacity on a certain fifth wheel, then the selection of a fifth wheel with a higher capacity is advised. For example, a tractor that is at a maximum vertical load of 50,000 lbs in a moderate duty application should be using a fifth wheel with a vertical load capacity of 55,000 lbs or greater. This additional capacity should give better service life over a longer period of time.

## Special applications:

- All logging, mining and oil field applications are considered severe duty. Do not select assemblies in the standard or moderate levels when a special application is designated.

## Minimum static load warning:

- Minimum static load warning!!! The trailer that is attached to the fifth wheel should impose a consistent vertical load. Repeated negative loading (trying to pull the fifth wheel off of the brackets with the kingpin) is not allowed. A minimum static load applied to the fifth wheel through the trailer is 10% of the gross trailer weight. See the load rating for the specific fifth wheel for maximum vertical load values.



Van trailers



Tankers and bulk trailers



Flatbeds, stretch and stake trailers



Lowbed trailers



Framed end and frameless dump trailers

**Important:** Contact your OEM or Fontaine Fifth Wheel for more information on the right fifth wheel for your application. Please refer to the Fontaine Fifth Wheel warranty statement for important warranty information. Selecting assemblies in conflict with this application guide without prior written approval from Fontaine engineering voids all warranties. A copy of the Fontaine service handbook is available at [www.fifthwheel.com](http://www.fifthwheel.com). Click "Support" and then "Helpful information".



# Duty Class Restrictions

With the Fontaine Fifth Wheel complete product line you can easily select the perfect fifth wheel for your application. We offer top plates and mounting options in a wide variety of sizes to handle even the most demanding applications.

To specify the right fifth wheel for your application two factors must be considered: load capacity and service conditions.

“Weight” refers to the amount of weight that a fifth wheel can handle. “Road type” refers to the operating environment and the type of equipment used in an application. “Travel type” refers to mileage between stops.

Standard Duty	
<b>Weight:</b>	Less than 95,000 lbs (43,000 kgs) gross combination weight (GCW)
<b>Road type:</b>	100% on-highway application on maintained concrete or asphalt roads
<b>Travel type:</b>	More than 30 miles between each couple
<b>Axle limitation:</b>	Maximum number of towed axles equals 3

Moderate duty (on-highway)	
<b>Weight:</b>	Less than 115,000 lbs (52,000 kgs) gross combination weight (GCW)
<b>Road type:</b>	100% on-highway application on maintained concrete or asphalt roads
<b>Travel type:</b>	No minimum mileage between couples
<b>Axle limitation:</b>	Maximum number of towed axles equals 4

Severe duty (on-highway)	
<b>Weight:</b>	More than 115,000 lbs (52,000 kgs) gross combination weight (GCW)
<b>Road type:</b>	Less than 10% off-highway application on maintained concrete, asphalt, gravel or crushed rock roads
<b>Travel type:</b>	No minimum mileage between couples.
<b>Axle limitation:</b>	No axle limitations

You don't choose a top plate based on “weight” only. Consider service conditions because a heavy load pulled on a paved road places less stress on a fifth wheel than a lighter load pulled in severe off-highway conditions.

The duty class restriction chart, top plate styles chart (page 4), and mounting options chart (page 5) can be used as a guide to help you select the right fifth wheel.

Fontaine has an application guide (LT-076) that can be obtained at:

[www.fifthwheel.com](http://www.fifthwheel.com)

(Choose “Support” and then “Helpful information”).

If you need further assistance contact Fontaine Fifth Wheel at: 800-874-9780.



On-line selection guide is available. Scan code or go to: [www.fifthwheel.com](http://www.fifthwheel.com) Choose “Support” then choose “Choosing the right fifth wheel”

Moderate duty (off-highway)	
<b>Weight:</b>	Less than 115,000 lbs (52,000 kgs) gross combination weight (GCW)
<b>Road type:</b>	Less than 10% off-highway application on maintained concrete, asphalt, gravel or crushed rock roads
<b>Travel type:</b>	No minimum mileage between couples
<b>Axle limitation:</b>	Maximum number of towed axles equals 4

Severe duty (off-highway)	
<b>Weight:</b>	More than 115,000 lbs (52,000 kgs) gross combination weight (GCW)
<b>Road type:</b>	Any off-highway application on all road types including non-maintained roads
<b>Travel type:</b>	No minimum mileage between couples
<b>Axle limitation:</b>	No axle limitations
<b>Special applications:</b>	All logging, mining and oil field applications fall into this category regardless of anticipated weight, road type or number of axles



## What is the warranty coverage?

Fontaine's warranty is for five years covering parts for material and workmanship. There are a few exceptions. See our existing warranty statement or call us at 800-874-9780 for more information. Warranty document is at [www.fifthwheel.com](http://www.fifthwheel.com) (Choose "Support" and then "Warranty").

## What is the recommended maintenance procedure?

Recommended maintenance is at least every 90 days or 30,000 miles. All recommended practices are located in the Fifth Wheel Handbook supplied with every unit shipped or may be obtained at [www.fifthwheel.com](http://www.fifthwheel.com) (Choose "Support" and then "Helpful information" LT-001 Instruction Handbook).

## What if my fifth wheel is hard to open?

Make sure a pre-service lubrication has been completed before unit is put in service. Make sure the driver is backing tight against the trailer after setting the trailer brakes. This will reduce any tension or pressure on the locking jaw and wedge.

**DO NOT dump chassis air bags before uncoupling from trailer.** Make sure the wedge-stop rod is properly set to the recommended gap. Make sure the truck and trailer are not in a bind or twist (No daylight between top plate and trailer plate). Check for any lower mount obstructions or interference underneath the wheel. Check for damage to the fifth wheel.

## Can I change the height of my fifth wheel?

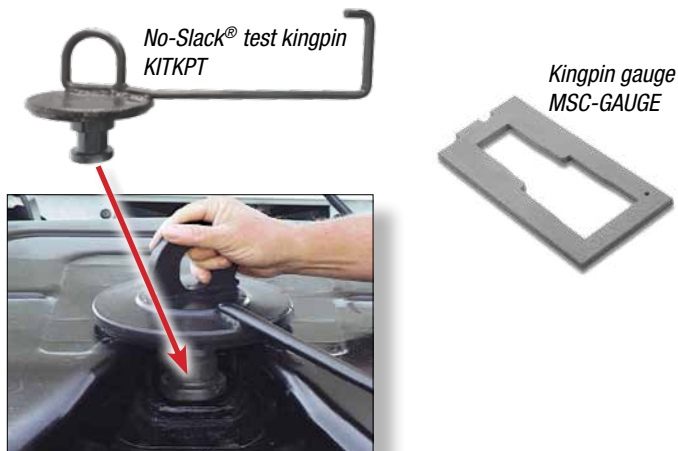
Changing fifth wheel height can be as simple as changing the brackets. It all depends on the type of application, style of fifth wheel and the type of existing base. These factors will determine just how high or low you can go.

## How much wear is allowed for a kingpin?

According to SAE J2228 - Kingpin Wear Limits, if the upper shoulder which is 2.875" new or the smaller 2" diameter is worn more than .125 (1/8)" the kingpin should be replaced (see MSC-GAUGE below).

## Does Fontaine provide tools for fifth wheels?

Popular tools are shown below. Contact your Fontaine Fifth Wheel sales representative to get these handy tools.

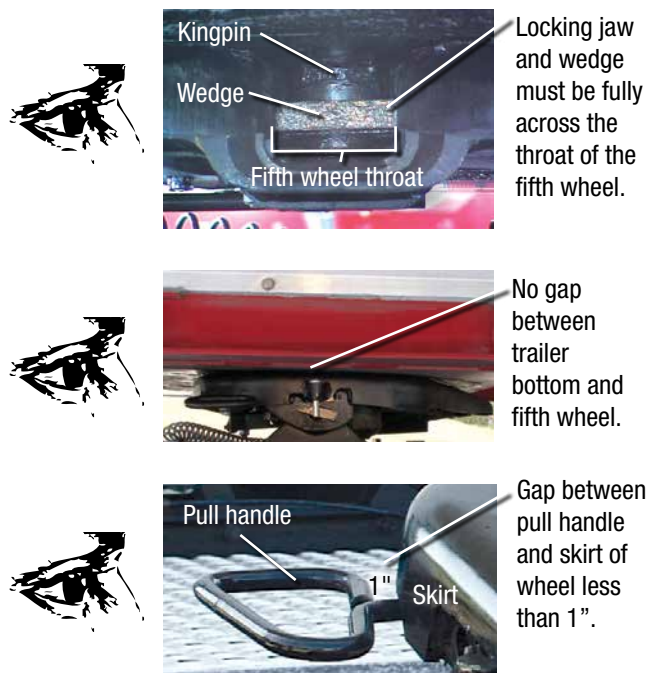


## How can I tell if my fifth wheel is properly locked?

Verify secure coupling with a "tug test", by easing the tractor forward, with the trailer brakes on, to feel resistance of the load. Set the parking brakes on the tractor and trailer and get out of the tractor and visually inspect, using a flashlight if necessary, that the fifth wheel is properly closed.

**The locking jaw and wedge must be fully across the throat of the fifth wheel, there must be no gap between the fifth wheel and the trailer plate, and the pull handle must be within 1" or less from the skirt of the fifth wheel. All three areas of the fifth wheel must be inspected to ensure that the fifth wheel is properly coupled.**

**Below are three critical areas of visual inspection that drivers must perform after every couple.**



**If the visual inspection indicates that you failed to obtain a proper couple, open the fifth wheel, inspect for damaged components, and repeat the coupling sequence.**

# Fontaine Fifth Wheel No-Slack® H7 Severe Duty Top Plate



#### Rating on AWB mounts

62,500 lbs vertical load  
150,000 pounds drawbar

#### Rating on PS5 and AWX mounts

70,000 lbs vertical load  
200,000 pounds drawbar pull

- Get No-Slack® technology packaged in a severe-duty cast steel top plate housing
- Steel reinforced in strategic areas using Finite Element Analysis
- Designed for the toughest applications

NEW INNOVATIVE PRODUCTS

## Fontaine LST Lock Sensing Technology



### An additional check to help protect your equipment and cargo

- Rugged design features high end components for greater reliability and durability
- Components are recessed in the steel reinforced housing for added protection
- A convenient and economical option that is easy to use
- Provides an additional check to supplement the required driver visual inspection and tug test
- Fontaine LST is a performance option to enhance 7000 and C7000 Series top plates



*Two electronic sensors communicate with the in-cab indicator to let you know when the kingpin is positioned in the lock.*



**New Fontaine 6000 NWB**

**NEW INNOVATIVE PRODUCT**

# The Lightest steel fifth wheel assembly in the industry

Vertical Load Rating:  
**50,000 lbs**

Drawbar Pull Rating:  
**150,000 lbs**



Fontaine SL6NWB675012

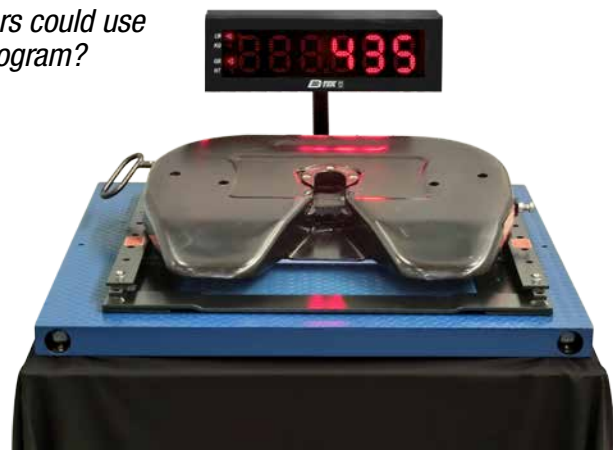
- New Fontaine® 6000 Series Fifth Wheel cuts weight without cutting performance or load rating
- Proven design made possible by Finite Element Analysis technology and strategic placement of high strength alloy steel
- 6000 Series No-Slack® fifth wheel combined with NWB mounting bracket is approximately 60 lbs lighter with no reduction in load ratings
- Same legendary No-Slack® locking technology with no change to locking mechanism or components
- Lock automatically self-adjusts to the trailer kingpin for a smoother ride, lower maintenance costs and longer component life

LIGHT in weight...  
**STRONG** in performance



Competitor H

*Maybe our competitors could use a weight loss program?*



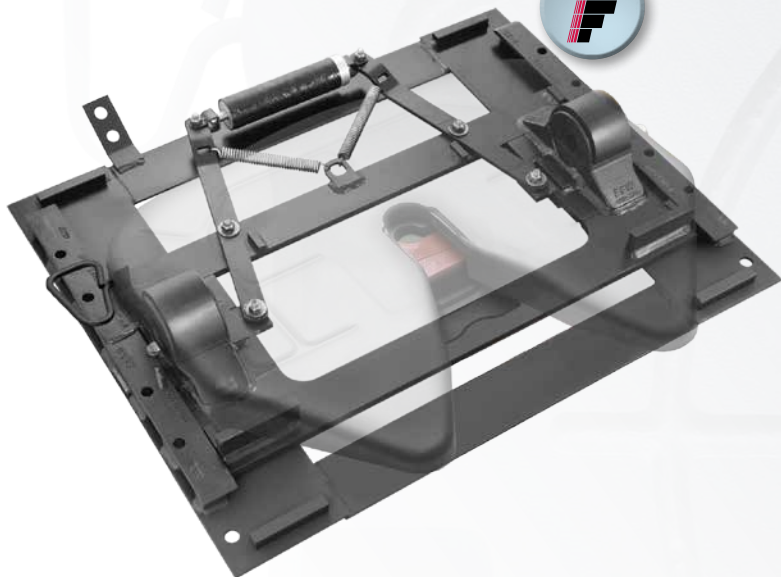
Competitor J



Scan this code to learn more about Fontaine 6000 Series weight savings.

# Standard Duty Air Slide Assemblies

## Light Weight Air Slide No-Slack® 6000 NWB Slide



No-Slack® 6000  
50,000 pounds vertical load

Part Number	Fifth Wheel Height	Slide Length	Weight
SL6NWB675012	6-3/4"	12"	372 lbs
SL6NWB675016		16"	379 lbs
SL6NWB675024		24"	393 lbs
SL6NWB775012	7-3/4"	12"	378 lbs
SL6NWB775016		16"	385 lbs
SL6NWB775024		24"	399 lbs
SL6NWB875012	8-3/4"	12"	383 lbs
SL6NWB875016		16"	390 lbs
SL6NWB875024		24"	404 lbs

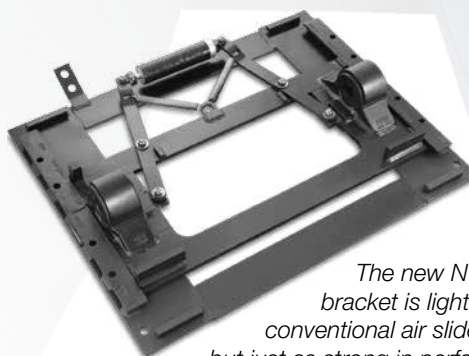
Typical left hand model shown in chart.

### Options

- Right hand (replace **SL** with **SR**)
- Air actuated (replace **SL** with **AA**): add 5 lbs

### Features

- Innovative weight saving design makes the NWB the lightest steel slide system available – helps fleets offset heavy emission system components
- 40-70 lbs lighter than competitive slide systems
- Improved fuel economy and low up-charge make the NWB very attractive to weight-sensitive, cost-conscious fleets
- Computer-aided design features a smaller footprint with steel reinforcement for strength and durability
- New greaseless bracket liner provides consistent lubrication, reduces wear (no metal-to-metal contact) and cuts maintenance costs
- Dual durometer two-piece bushing for improved shock absorption and easier maintenance



*The new NWB air slide bracket is lighter than conventional air slide models, but just as strong in performance!*  
The NWB combines proven components with lightweight features into one cost-effective product.



# Standard/Moderate Duty Stationary Bracket Assemblies

## Stationary Bracket Mount No-Slack® 6000, 7000 & 7000CC BSL



6000 7000 7000CC Clean  
50,000 pounds vertical load 55,000 pounds vertical load 55,000 pounds vertical load  
Connect

6000 BSL Part Number	7000 BSL Part Number (Add 39 lbs)	7000CC BSL Part Number (Add 42 lbs)	Fifth Wheel Height	6000 Weight
SL6BSL5375	SL7BSL5375	SLCBSL5375	5-3/8"	226 lbs
SL6BSL5875	SL7BSL5875	SLCBSL5875	5-7/8"	228 lbs
SL6BSL6875	SL7BSL6875	SLCBSL6875	6-7/8"	233 lbs
SL6BSL7875	SL7BSL7875	SLCBSL7875	7-7/8"	239 lbs
SL6BSL8875	SL7BSL8875	SLCBSL8875	8-7/8"	246 lbs
SL6BSL9875	SL7BSL9875	SLCBSL9875	9-7/8"	253 lbs

Typical left hand model shown in chart.

### Options (see pages 6-7)

- Right hand (replace **SL** with **SR**)
- Air actuated (replace **SL** with **AA**): add 5 lbs
- Auto-lube left (replace **SL** with **AL**) Auto-lube models are drilled and tapped for lube system (7000/7000CC)
- LST Electronic lock indicator left (replace **SL** with **SLE**) (7000/7000CC)

### Features

- BSL fifth wheels are ideal for applications where axle weight, bridge length and kingpin settings remain constant
- BSL brackets are welded directly to the mounting base on your vehicle to save weight and cut costs
- Rapidly gaining in popularity due to weight savings, simplicity of design and overall economy

# Standard/Moderate Duty Plate Mount Assemblies

## Adjustable Plate Mount No-Slack® 6000, 7000 & 7000CC PML



6000

50,000 pounds  
vertical load



7000

55,000 pounds  
vertical load



7000CC

55,000 pounds  
vertical load

6000 PML Part Number	7000 PML Part Number (Add 39 lbs)	7000CC PML Part Number (Add 42 lbs)	Fifth Wheel Height	6000 Weight
SL6PML5625	SL7PML5625	SLCPML5625	5-5/8"	277 lbs
SL6PML6250	SL7PML6250	SLCPML6250	6-1/4"	279 lbs
SL6PML7250	SL7PML7250	SLCPML7250	7-1/4"	286 lbs
SL6PML8250	SL7PML8250	SLCPML8250	8-1/4"	294 lbs
SL6PML9250	SL7PML9250	SLCPML9250	9-1/4"	299 lbs
SL6PML10250	SL7PML10250	SLCPML10250	10-1/4"	325 lbs

Typical left hand model shown in chart.

### Options (See pages 6-7)

- Right hand (replace **SL** with **SR**)
- Air actuated (replace **SL** with **AA**): add 5 lbs
- Auto-lube left (replace **SL** with **AL**) Auto-lube models are drilled and tapped for lube system (7000/7000CC)
- LST Electronic lock indicator left (replace **SL** with **SLE**) (7000/7000CC)

### Features

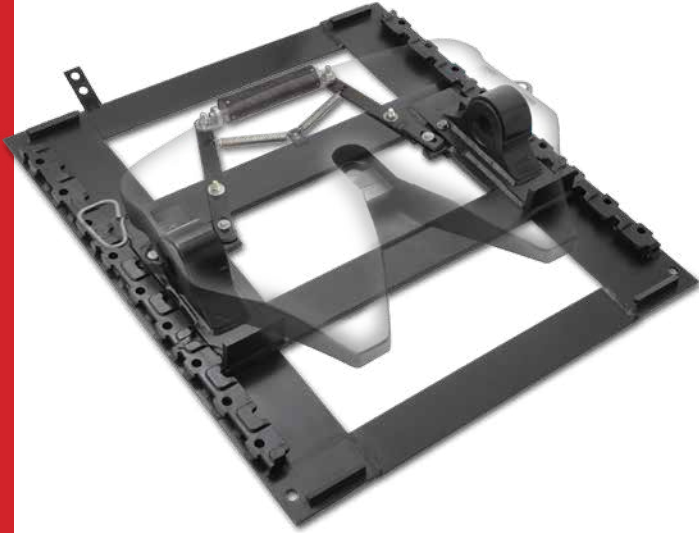
- Two-inch adjustment increments give you greater versatility for improved payload distribution
- Computer design technology cuts excess weight without sacrificing one pound of capacity
- New greaseless bracket liner gives you consistent lubrication, reduces wear (no metal-to-metal contact) and cuts maintenance costs
- Dual durometer two-piece bushing for improved shock absorption and better support
- Computer designed cast bracket for lighter weight and greater strength
- Brackets are welded to a 3/8" steel plate that has six bolt holes on each side
- New ultra-low 5.625" height mount now available



# Standard/Moderate Duty Air Slide Assemblies

## Air Slide

### No-Slack® 6000, 7000 & 7000CC LWB



6000  
50,000 pounds  
vertical load

7000  
55,000 pounds  
vertical load

7000CC Clean  
Connect  
55,000 pounds  
vertical load

6000 LWB Part Number	7000 LWB Part Number (Add 36 lbs)	7000CC LWB Part Number (Add 39 lbs)	Fifth Wheel Height	Slide Length	6000 Weight
SL6LWB675012	SL7LWB675012	SLCLWB675012	6-3/4"	12"	402 lbs
SL6LWB675016	SL7LWB675016	SLCLWB675016		16"	416 lbs
SL6LWB675024	SL7LWB675024	SLCLWB675024		24"	422 lbs
SL6LWB675036	SL7LWB675036	SLCLWB675036		36"	450 lbs
SL6LWB675048	SL7LWB675048	SLCLWB675048		48"	472 lbs
SL6LWB725012	SL7LWB725012	SLCLWB725012	7-1/4"	12"	405 lbs
SL6LWB725016	SL7LWB725016	SLCLWB725016		16"	419 lbs
SL6LWB725024	SL7LWB725024	SLCLWB725024		24"	425 lbs
SL6LWB725036	SL7LWB725036	SLCLWB725036		36"	453 lbs
SL6LWB725048	SL7LWB725048	SLCLWB725048		48"	475 lbs
SL6LWB825012	SL7LWB825012	SLCLWB825012	8-1/4"	12"	410 lbs
SL6LWB825016	SL7LWB825016	SLCLWB825016		16"	424 lbs
SL6LWB825024	SL7LWB825024	SLCLWB825024		24"	430 lbs
SL6LWB825036	SL7LWB825036	SLCLWB825036		36"	458 lbs
SL6LWB825048	SL7LWB825048	SLCLWB825048		48"	480 lbs
SL6LWB925012	SL7LWB925012	SLCLWB925012	9-1/4"	12"	415 lbs
SL6LWB925016	SL7LWB925016	SLCLWB925016		16"	429 lbs
SL6LWB925024	SL7LWB925024	SLCLWB925024		24"	435 lbs
SL6LWB925036	SL7LWB925036	SLCLWB925036		36"	463 lbs
SL6LWB925048	SL7LWB925048	SLCLWB925048		48"	485 lbs
SL6LWB1025012	SL7LWB1025012	SLCLWB1025012	10-1/4"	12"	420 lbs
SL6LWB1025016	SL7LWB1025016	SLCLWB1025016		16"	434 lbs
SL6LWB1025024	SL7LWB1025024	SLCLWB1025024		24"	440 lbs
SL6LWB1025036	SL7LWB1025036	SLCLWB1025036		36"	468 lbs
SL6LWB1025048	SL7LWB1025048	SLCLWB1025048		48"	490 lbs

## Features

- Innovative weight saving design is lighter than its predecessor without losing an ounce of capacity!
- Save 20 to 50 lbs depending on configuration
- Computer-aided design features a smaller footprint with steel reinforcement for strength and durability
- New greaseless bracket liner provides consistent lubrication, reduces wear (no metal-to-metal contact) and cuts maintenance costs
- Two-inch slide increments give you greater versatility for improved payload distribution
- Quad-Lock four-point locking system increases locking surface area for greater stability and improved wear characteristics
- Automatically removes slack from the slide assembly for a smoother ride and longer life
- Dual durometer two-piece bushing for improved shock absorption and easier maintenance

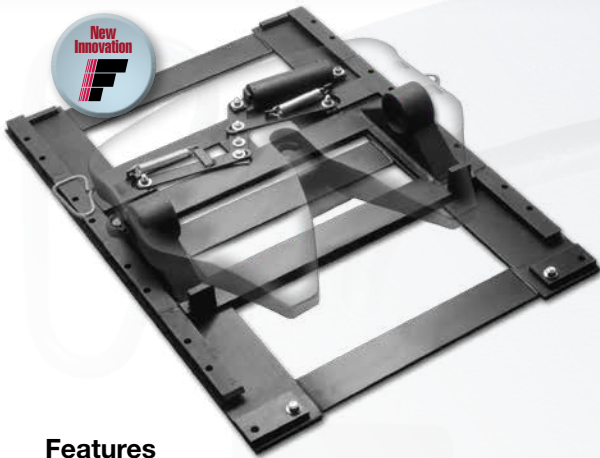
Typical left hand model shown in chart.

## Options (see pages 6-7)

- Right hand (replace **SL** with **SR**)
- Air actuated (replace **SL** with **AA**): add 5 lbs
- Auto-lube left (replace **SL** with **AL**) Auto-lube models are drilled and tapped for lube system (7000/7000CC)
- LST Electronic lock indicator left (replace **SL** with **SLE**) (7000/7000CC)



**Air Slide**  
**No-Slack® H7 AWB**



**Features**

- The Fontaine AWB air slide bracket makes adjustments faster and easier than ever before
- A great solution for customers who reposition the fifth wheel after every load
- An air cylinder drives a mechanical linkage to release the slide locking wedges
- To protect the stainless steel shaft from corrosion, bending and roadspray, the unit operates from a closed position

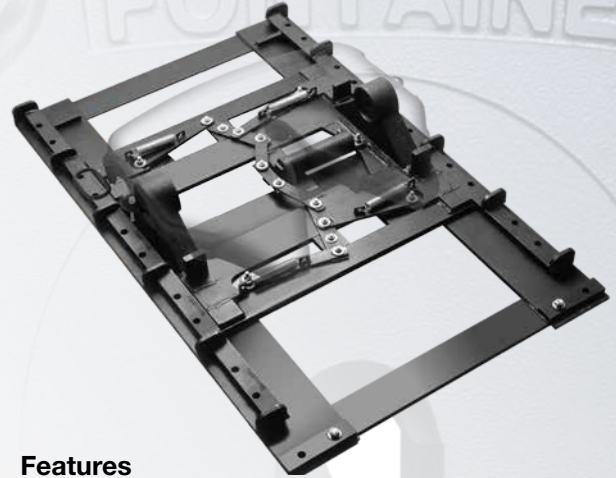


H7  
 62,500 pounds vertical load  
 150,000 pounds drivebar pull

H7 AWB Part Number	Fifth Wheel Height	Slide Length	Weight
SLH7AWB775012	7-3/4"	12"	557 lbs
SLH7AWB775016		16"	564 lbs
SLH7AWB775020		20"	568 lbs
SLH7AWB775024		24"	572 lbs
SLH7AWB775036		36"	591 lbs
SLH7AWB775048		48"	626 lbs
SLH7AWB875012	8-3/4"	12"	563 lbs
SLH7AWB875016		16"	570 lbs
SLH7AWB875020		20"	574 lbs
SLH7AWB875024		24"	578 lbs
SLH7AWB875036	9-3/4"	36"	597 lbs
SLH7AWB875048		48"	632 lbs
SLH7AWB975012		12"	569 lbs
SLH7AWB975016	9-3/4"	16"	576 lbs
SLH7AWB975020		20"	580 lbs
SLH7AWB975024		24"	584 lbs
SLH7AWB975036		36"	603 lbs
SLH7AWB975048		48"	638 lbs
SLH7AWB1075012		10-3/4"	12"
SLH7AWB1075016	16"		596 lbs
SLH7AWB1075020	20"		600 lbs
SLH7AWB1075024	24"		604 lbs
SLH7AWB1075036	36"		623 lbs
SLH7AWB1075048	48"		658 lbs

**Severe Duty**  
**Air Slide Assemblies**

**Air Slide**  
**No-Slack® H7 AWX**



**Features**

- Perfect for tankers and other heavy haulers
- Repositioning the top plate is fast and easy
- The air cylinder drives a mechanical linkage to engage and release the slide locking wedges
- A computer-designed specially reinforced substructure adds even more support in load bearing areas
- Loaded with performance features that make it the king of its class
- When heavy-duty isn't heavy enough, specify the Fontaine XTRA™ heavy-duty air slide fifth wheel

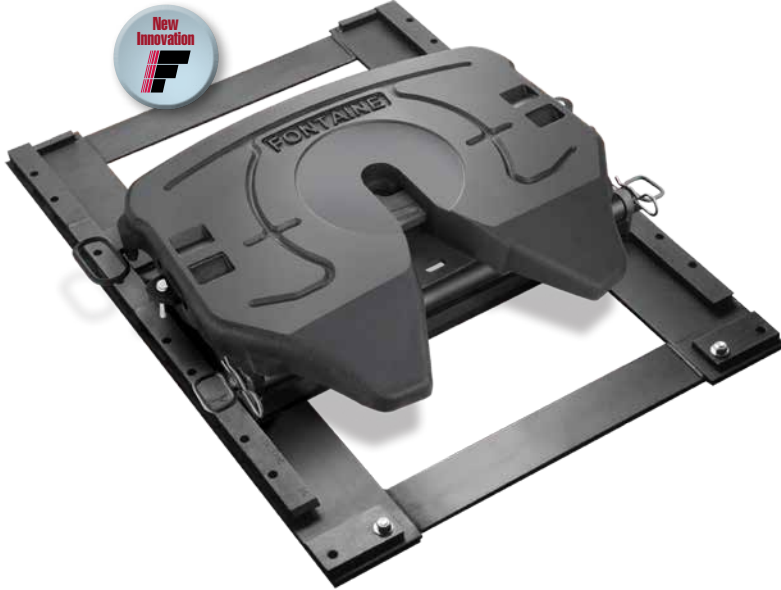


H7  
 70,000 pounds vertical load  
 200,000 pounds drivebar pull

H7 AWX Part Number	Fifth Wheel Height	Slide Length	Weight
SLH7AWX875012	8-3/4"	12"	644 lbs
SLH7AWX875024		24"	674 lbs
SLH7AWX875036		36"	713 lbs
SLH7AWX875048		48"	743 lbs
SLH7AWX975012	9-3/4"	12"	650 lbs
SLH7AWX975024		24"	680 lbs
SLH7AWX975036		36"	719 lbs
SLH7AWX975048		48"	749 lbs
SLH7AWX1075012	10-3/4"	12"	656 lbs
SLH7AWX1075024		24"	686 lbs
SLH7AWX1075036		36"	725 lbs
SLH7AWX1075048		48"	755 lbs



**Blocked (No-Tilt) Air Slide  
No-Slack® H7  
Blocked AWB**



H7  
62,500 pounds vertical load  
150,000 pounds drivebar pull

H7 Blocked AWB Part Number	Fifth Wheel Height	Slide Length	Weight
BLH7AWB775012	7-3/4"	12"	602 lbs
BLH7AWB775016		16"	610 lbs
BLH7AWB775024		24"	622 lbs
BLH7AWB775036		36"	642 lbs
BLH7AWB775048		48"	669 lbs
BLH7AWB875012	8-3/4"	12"	611 lbs
BLH7AWB875016		16"	619 lbs
BLH7AWB875024		24"	631 lbs
BLH7AWB875036		36"	651 lbs
BLH7AWB875048	9-3/4"	48"	678 lbs
BLH7AWB975012		12"	620 lbs
BLH7AWB975016		16"	628 lbs
BLH7AWB975024		24"	640 lbs
BLH7AWB975036	10-3/4"	36"	660 lbs
BLH7AWB975048		48"	687 lbs
BLH7AWB1075012		12"	643 lbs
BLH7AWB1075016		16"	651 lbs
BLH7AWB1075024	10-3/4"	24"	663 lbs
BLH7AWB1075036		36"	683 lbs
BLH7AWB1075048		48"	710 lbs

**Features**

- The Fontaine Blocked AWB has all of the same great features of the standard AWB plus the special "blocked" feature that enables the mount to be used in frameless dump applications
- An air cylinder drives a mechanical linkage to release the slide locking wedges
- To protect the stainless steel shaft from corrosion, bending and roadspray, the unit operates from a closed position
- Composite air cylinder features improved sealing performance and superior corrosion resistance for longer service life

# Severe Duty Assemblies

## Reinforced Stationary Plate No-Slack® H7 PS5



H7  
70,000 pounds vertical load  
200,000 pounds drivebar pull

H7 PS5 Part Number	Fifth Wheel Height	Weight
SLH7PS58375	8-3/8"	500 lbs
SLH7PS59375	9-3/8"	504 lbs
SLH7PS510375	10-3/8"	508 lbs
SLH7PS511375	11-3/8"	526 lbs

### Features

- Fontaine PS5 steel reinforced stationary plate mount is perfect for hauling heavy loads
- Corrugated design features additional structural steel reinforcement for greater stability
- Gives you the extra strength you need to handle severe service applications

## Blocked (No-Tilt) Reinforced Stationary Plate No-Slack® H7 Blocked PS5



H7  
70,000 pounds vertical load  
200,000 pounds drivebar pull

H7 Blocked PS5 Part Number	Fifth Wheel Height	Weight
BLH7PS58375	8-3/8"	509 lbs
BLH7PS59375	9-3/8"	514 lbs
BLH7PS510375	10-3/8"	521 lbs
BLH7PS511375	11-3/8"	528 lbs

### Features

- The Fontaine Blocked PS5 has all of the strength of the standard PS5 plus a special "blocked" (no tilt) feature that enables the mount to be used in frameless dump applications
- Corrugated design features additional structural steel reinforcement for greater stability
- Gives you the extra strength you need to handle heavy loads and severe service applications

Mount	Description	Width x length	Holes per side	Hole spacing across frame	First hole measured from rear, then spacing between holes
PS5	Plate short	40.00" x 23.75"	5 (for 5/8" hardware)	38"	1.88", 6.00" - 4.00" - 4.00" - 6.00"



## Focused on Fifth Wheels

The Fontaine® Fifth Wheel R&D Center is the largest, best equipped laboratory in the world focused exclusively on fifth wheel technology.



### Models Lookup

Scan code or go to:  
[www.fifthwheel.com/models/](http://www.fifthwheel.com/models/)



### Selection Guide

Scan code or go to:  
[www.fifthwheel.com/applications/](http://www.fifthwheel.com/applications/)



### Complete Assembly Brochure

Scan code or go to:  
[www.fifthwheel.com/catalog/](http://www.fifthwheel.com/catalog/)

